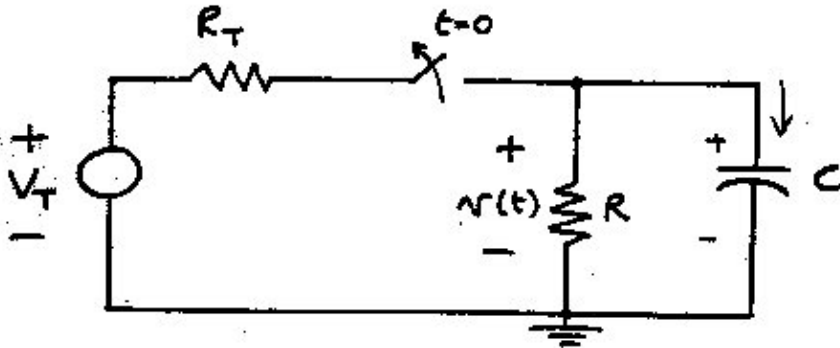


**EE42 Fall 1992
Midterm #2
Professor Liam Murphy**

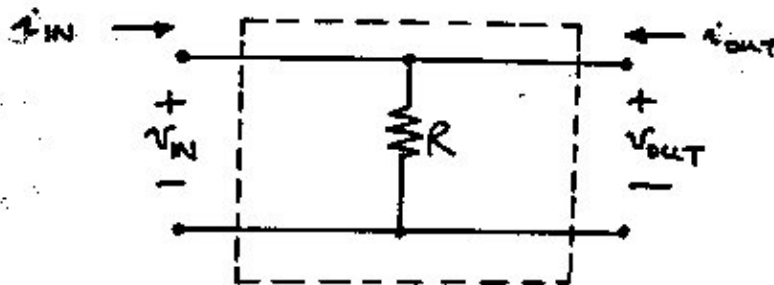
Problem #2 [20 points]

In the circuit below, the switch has been closed for a very long time. At time $t = 0$ it is opened. Plot $v(t)$ for $t > 0$. Indicate clearly on your plot the time constant τ , and the value of $v(t)$ at $t = 0^+$ and as t goes infinity.



Problem #4 [20 points]

An amplifier has the following simple structure :



Find R'_i , R'_v , and A' for this amplifier.

**Posted by HKN (Electrical Engineering and Computer Science Honor Society)
University of California at Berkeley
If you have any questions about these online exams
please contact examfile@hkn.eecs.berkeley.edu.**