

# *Eta Kappa Nu, Mu Chapter Candidate Quiz for Spring 2008*

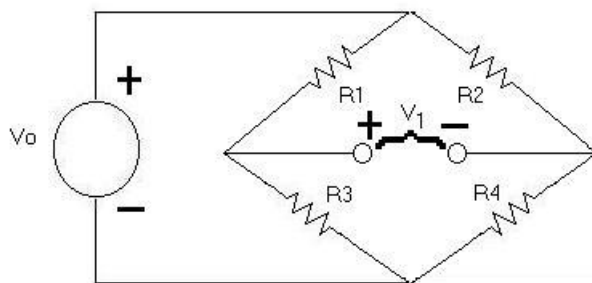
Feel free to discuss your answers with other candidates and officers.

Your score on this examination will factor into your application for candidacy. (Not curved!)

Good answer sources: [hkn.eecs.berkeley.edu](http://hkn.eecs.berkeley.edu) and [hkn.org](http://hkn.org)

0. Name \_\_\_\_\_
1. Eta Kappa Nu was founded at \_\_\_\_\_.
2. Eta Kappa Nu was founded in the year \_\_\_\_\_.
3. The Berkeley Chapter is known as the \_\_\_\_\_ chapter.
4. The Berkeley Chapter was established in the year \_\_\_\_\_.
5. The colors of the organization are \_\_\_\_\_.
6. The emblem of the organization is \_\_\_\_\_.
  
7. What are the six officer positions mandated by the nationals for each chapter?
  1. \_\_\_\_\_ 3. \_\_\_\_\_ 5. \_\_\_\_\_
  2. \_\_\_\_\_ 4. \_\_\_\_\_ 6. \_\_\_\_\_
  
8. Name four student services carried out by the Berkeley Chapter.
  1. \_\_\_\_\_ 3. \_\_\_\_\_
  2. \_\_\_\_\_ 4. \_\_\_\_\_
  
9. Name any current Berkeley EECS faculty who is a member of HKN. \_\_\_\_\_  
 At which chapter did he or she initiate? \_\_\_\_\_
  
10. What are the locations of the two HKN Offices?
  1. \_\_\_\_\_ 2. \_\_\_\_\_
  
11. Figure 1:  $R_4 =$  \_\_\_\_\_ ohms.

**This is the Bridge circuit. When  $V_1$  equals zero, the Bridge circuit is said to be balanced. Suppose  $R_1 = 27\text{ k}\Omega$ ,  $R_2 = 47\text{ k}\Omega$ , and  $R_3 = 10\text{ k}\Omega$ . What must  $R_4$  be to balance the Bridge?**



**Figure 1**